



RACELOGIC VBOX HD2 CAMERA kit
Audi RS 3 LMS MY2021

RACING CAMERAS – RACELOGIC VBOX VIDEO HD2

Introduction

Audi worked together with RACELOGIC to integrate the VBOX racing cameras into the Audi LEON COMPETICIÓN and the AUDI RS3 LMS.

We offer to the customers a complete plug & play bundle with the two-camera system ready to receive the main driver's data - throttle, brake, rpm and more.

In this TN08, the following information will be explained:

- / Racelogic software to customize the video layout and improve driver's performance
- / How to install the bundle in the car
- / How to purchase the bundle



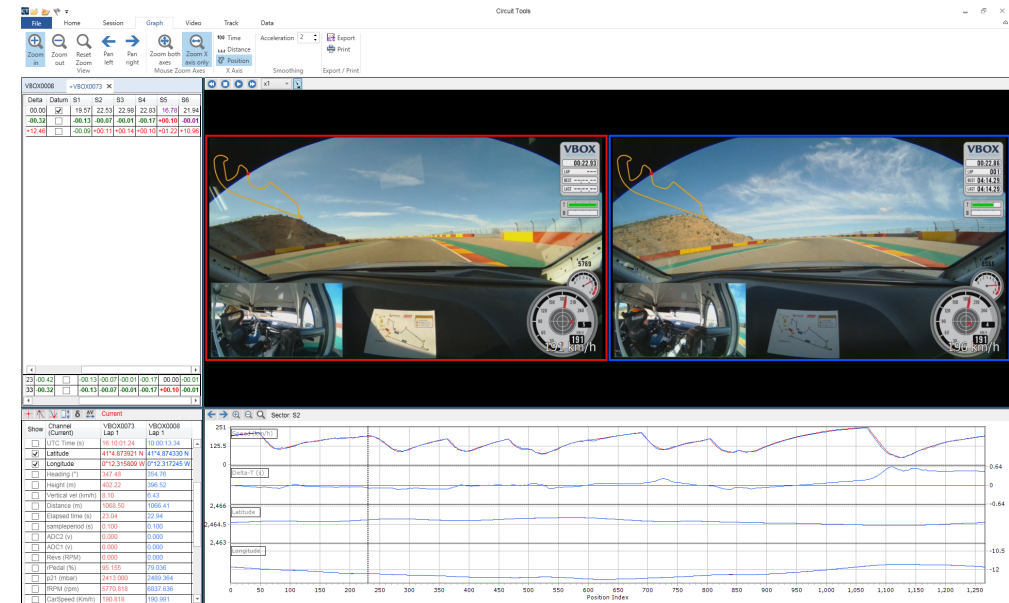
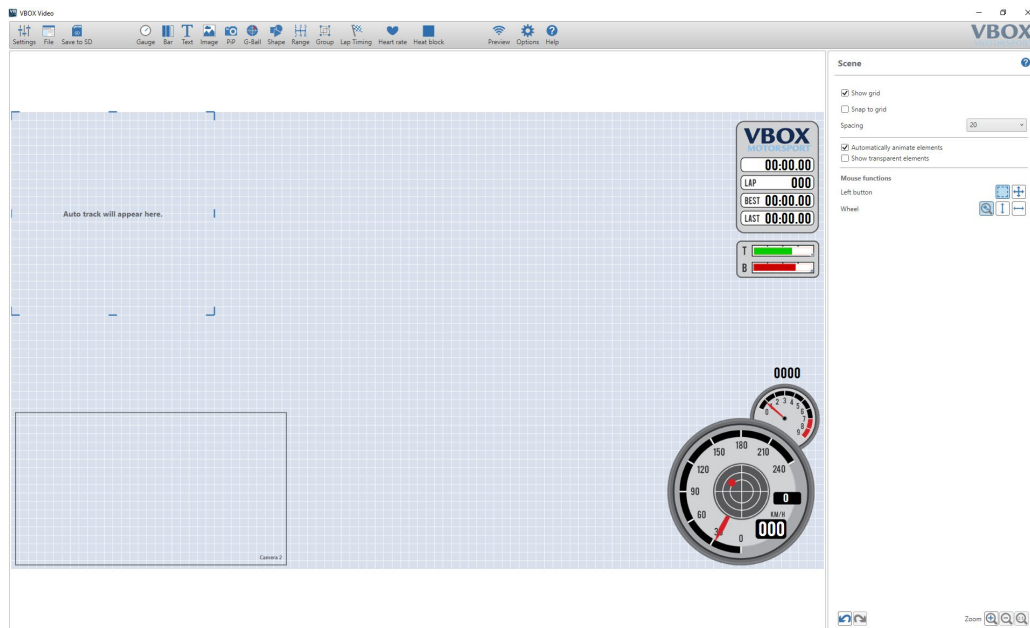
RACING CAMERAS – RACELOGIC VBOX VIDEO HD2

VBOX tools to customise the video layout and driver's performance

RACELOGIC offers different software tools to customize and analyze the driver's performance:

\ VBOX HD2 SETUP. A software tool to customise the layout of your cameras and data available in the video, as well as configure the operation of the VBOX.

\ VBOX CIRCUIT TOOLS. Designed by racing drivers, for racing drivers, and aimed to automate many tasks to quickly present a driver with the crucial information required to improve lap-times.



RACING CAMERAS – RACELOGIC VBOX VIDEO HD2

VBOX software tools to customize the video layout and analyse driver performance

All of the software installation files can be found on the supplied SD card. Useful links to Racelogic's online resources can be found below:

\ VBOX HD2
Documentation

[VBOX HD2 Quick Start Guide](#)

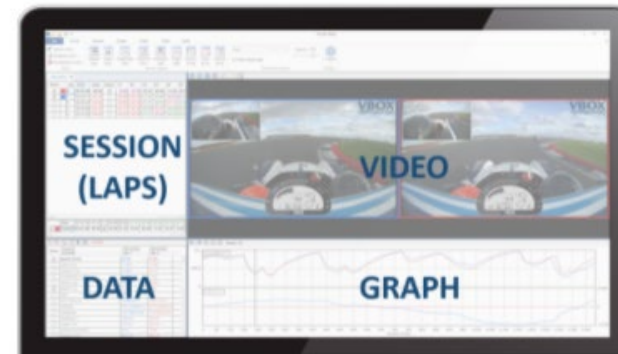
[VBOX HD2 User Guide](#)

[VBOX HD2 Troubleshooting](#)

\ Circuit Tools Documentation

[Circuit Tools User Guide \(Windows\)](#)

[Circuit Tools User Guide \(Mac\)](#)



RACING CAMERAS – RACELOGIC VBOX VIDEO HD2

How to install the VBOX?

You need to follow the quick start guide (link in the previous slide).

The only difference is that you will need to connect “TCR VBox Video HD2 CAN/Power Cable” to the auxiliary ECU connector (picture below)



IMPORTANT! You may need to update your ECU to the last acquisition table to receive all the channels. **The process is explained in the TN07.**

Where can I find the Audi scene configuration file for the VBOX?

You will receive the Audi scene on the supplied SD card.

If there are any updates, you will find it in the Audi download area:

<http://vwgroupmotorsport-onlineplatform.com/downloads/Audiracing?category=12>

RACING CAMERAS – RACELOGIC VBOX VIDEO HD2

How to purchase the bundle?

You need to contact Racelogic directly. The contact person information and the part reference are below:

Jon Holman Motorsport Product Manager

Email: sales@vboxmotorsport.co.uk

Tel: +44 1280 823 803

Part No	Description	Retail Price*
RLVDHD2/TCR	VBOX Video HD2 System for TCR Competitors Only	€ 3,090.00

*Racelogic may apply minor changes to the final price. The shipment cost is not included.

